

**NOTICE NO. COUNCIL 06/04/2019**

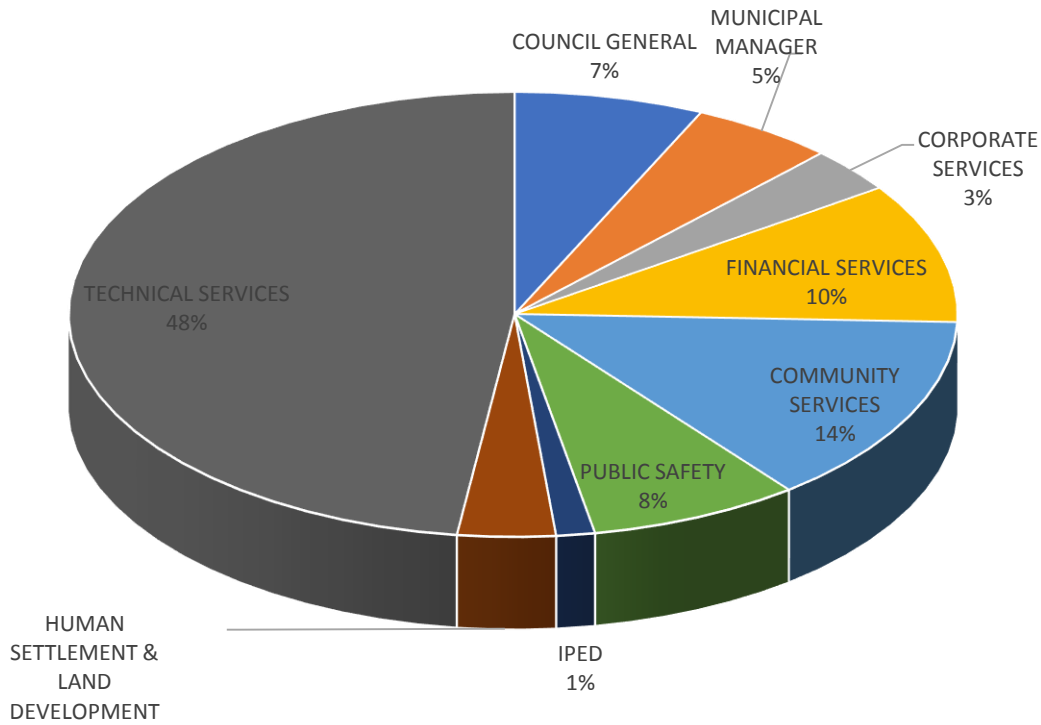
**FINAL REVIEWED IDP (2017/2022) AND BUDGET STRATEGY AND EXPENDITURE FRAMEWORK  
FOR 2018/19- 2020/21**

Notice is hereby given in terms of Section 22 of the Municipal Finance Management Act (56 of 2003) read together with section 21 of the Municipal Systems Act (no 32 of 2000) that Final Reviewed Integrated Development Plan for 2017/22 and Budget Strategy and Expenditure Framework for 2019/20-2021/22 have been prepared and tabled before Council of Enoch Mgijima Local Municipality on the 29th March 2019. The reviewed documents were tabled together with Municipal tariffs and Budget related policies which are available for inspection.

**The Budget as tabled by council are as follows:**

<b>DEPARTMENTAL BUDGET 2019/20</b>	
<b>DEPARTMENTS</b>	<b>BUDGET</b>
COUNCIL GENERAL	44 394 844
MUNICIPAL MANAGER	33 839 929
CORPORATE SERVICES	21 145 434
FINANCIAL SERVICES	66 000 267
COMMUNITY SERVICES	89 817 130
PUBLIC SAFETY	49 407 447
IPED	9 064 498
HUMAN SETTLEMENT & LAND DEVELOPMENT	22 936 923
TECHNICAL SERVICES	309 914 635
<b>TOTAL</b>	<b>646 521 107</b>

## DEPARTMENTAL BUDGET ALLOCATIONS



The following tariffs were also tabled alongside with the budget:

### **ROPERTY RATES AND LEVIES**

#### **Proposed increment 2019/20 at 0.0%**

General Rate	2018/19	2019/20	
Domestic (cents in a Rand)	0.007991	0.00839055	<b>Cents in a Rand</b>
Business/ Commercial (cents in a Rand)	0.0101018	0.01060689	<b>Cents in a Rand</b>
Government/ Parastatals (State Owned) (cents in a Rand)	0.0079924	0.00839202	<b>Cents in a Rand</b>
Agricultural (cents in a Rand)	0.002041	0.00214305	<b>Cents in a Rand</b>
PSI (cents in a Rand)	0.002041	0.00214305	<b>Cents in a Rand</b>

Parking Development Rate (cents in a Rand)			<b>Cents in a Rand</b>
Vacant land	0.0373226	0.03918873	<b>Cents in a Rand</b>
Municipal Properties			<b>Exempted</b>
Places of Worship			<b>Exempted</b>
PBO			<b>Exempted</b>

**PROPOSED REFUSE TARIFFS 2019/20 FY**

**WASTE MANAGEMENT DEPARTMENT**

**Refuse tariff increase of 5.0%**

				<b>PROPOSED</b>	<b>PROPOSED</b>	<b>PROPOSED</b>	<b>PROPOSED</b>	
<b>DESCRIPTION</b>	<b>REMOVALS PER WEEK</b>	<b>CHARGE PER BIN 2017/18</b>	<b>ADDITIONAL BIN 2017/18</b>	<b>CHARGE PER BIN 2018/19</b>	<b>ADDITIONAL BIN 2018/19</b>	<b>CHARGE PER BIN 2019/20</b>	<b>ADDITIONAL BIN 2019/20</b>	
<b>DOMESTIC</b>	1	R 94,68	R 94,68	R 98,94	R 98,94	R 104,00	R 104,00	
<b>BUSINESS/OTHER</b>	2	R 147,53	R 110,70	R 157,16	R 115,68	R 165,00	R 121,46	
<b>BUSINESS/OTHER</b>	3	R 221,35	R 166,05	R 231,31	R 173,52	R 243,00	R 182,19	
<b>BUSINESS/OTHER</b>	4	R 295,15	R 213,60	R 308,43	R 223,21	R 323,85	R 234,37	
<b>BUSINESS/OTHER</b>	5	R 368,93	R 276,55	R 385,53	R 288,99	R 404,80	R 303,43	
<b>BUSINESS/OTHER</b>	6	R 442,65	R 289,97	R 462,56	R 301,01	R 485,68	R 316,00	
<b>INDIGENTS</b>	1	R 0,00	R 0,00	R 0,00	R 0,00	R 0,00	R 0,00	
<b>OLD AGE HOMES</b>	1	R 94,68	R 94,68	R 98,94	R 98,94	R 104,00	R 104,00	

<b>BULK CONTAINER - SMALL</b>		R 260,39	R 175,20	R 272,10	R 183,08	R 285,70	R 192,23	
<b>BULK CONTAINER - LARGE</b>		R 372,32	R 175,68	R 389,07	R 183,58	R 408,52	R 192,75	
<b>4.5M CONTAINERS</b>		R 457,78	R 259,80	R 478,38	R 271,14	R 502,29	R 284,69	
<b>18M CONTAINERS</b>		R 705,74	R 378,37	R 737,49	R 395, 39	R 774,36	R 415,15	
<b>770 LITRE CONTAINERS</b>		R 282,89	R 143,08	R 295,62	R 149,51	R 310,40	R 156,98	
<b>REFUSE DISPOSAL SITE</b>			<b>R 94,50</b>		<b>R 98, 75</b>		<b>R 104.00</b>	

**ELECTRICITY TARIFFS 2019– 2020 FINANCIAL YEAR**

## DOMESTIC TARIFFS

### Former LUKHANJI:

		2018/19	2019/20	%
<b>Domestic High T1 &amp; Farm Lines</b>				
<i>Tariff Blocks</i>		<i>c/kWh</i>	<i>c/kWh</i>	
Block 1	(0 - 50 kWh)	92.51	101.21519	9%
Block 2	(51 - 350 kWh)	119.38	130.61366	9%
Block 3	(351 - 600 kWh)	164.33	179.79345	9%
Block 4	(>600 kWh)	194.56	212.8681	9%
Basic Charge: R/month		195	213.3495	9%

<b>Domestic Pre-Paid T2</b>				
<i>Tariff Blocks</i>		<i>c/kWh</i>	<i>c/kWh</i>	
Block 1	(0 - 50 kWh)	92.51	101.21519	9%
Block 2	(51 - 350 kWh)	119.38	130.61366	9%
Block 3	(351 - 600 kWh)	164.33	179.79345	9%
Block 4	(>600 kWh)	194.56	212.8681	9%

### Former INKWANCA:

		2018/19	2019/20	%
<b>Domestic Consumers High</b>				
Basic Charge: (R/month)		167.07	182.79	9%
Energy Charge (c/kWh):		148.61	162.59	9%

<b>Domestic Pre-Paid Indigent</b>				
Basic Charge: (R/month)		165.51	181.08449	9%
Energy Charge (c/kWh):		109.08	119.34443	9%

### Former TSOLWANA:

		2018/19	2019/20	%
<b>Domestic Indigent Pre-Paid</b>				
Energy Charge (c/kWh):		135.2	147.92232	9%

<b>Residential Pre-Paid &amp; Demand 0-59Amp Incl. Churches</b>				
Energy Charge (c/kWh):		154.28	168.79775	9%

## COMMERCIAL TARIFFS

### Former LUKHANJI:

	2018/19	2019/20	% Increase
<b>Commercial Pre-Paid T4</b>			
Energy Charge (c/kWh)	201.93	220.93	9%

<b>Commercial Old Age Homes</b>			
Basic Charge: (R/month)	798.95	874.13	9%
Energy Charge (c/kWh):	54.17	59.27	9%
Demand Charge (c/KVA)	148.39	162.35	9%

<b>Commercial Small Users T3</b>			
Basic Charge: (R/month)	704.45	770.74	9%
Energy Charge (c/kWh):			
≤500	201.8	220.78938	9%
>500	157.52	172.342632	9%

<b>Farm Lines: General Power Users</b>			
Basic Charge: (R/month)	704.45	770.74	9%
Energy Charge (c/kWh):			
≤500	203.85	223.03	9%
>500	159.32	174.31	9%

### Former INKWANCA:

<b>Small Commercial/ Government Consumers</b>			
Basic Charge: (R/month)	430.76	471.29	9%
Energy Charge (c/kWh):	177.46	194.16	9%

### Former TSOLWANA:

<b>Commercial Pre-Paid</b>			
Energy Charge (c/kWh):	170.21	186.23	9%

<b>Commercial Credit Metering</b>			
Basic Charge: (R/month)	200.14	218.97	9%
Energy Charge (c/kWh):	170.20	186.22	9%

<b>Commercial Bakery</b>			
Basic Charge: (R/month)	187.21	204.83	9%
Energy Charge (c/kWh):	153.85	168.33	9%

<b>Commercial Large kVA</b>			
Basic Charge: (R/month)	352.54	385.71	9%
Energy Charge (c/kWh):	59.73	65.35	9%
Demand Charge (c/KVA)	195.62	214.03	9%

## INDUSTRIAL TARIFFS

### Former LUKHANJI:

		2018/19	2019/20	% Increase
<b>Large Power Users ≤80kVA T5</b>				
Basic Charge: (R/month)		1 356.17	1 483.79	9%
Energy Charge (c/kWh):		90.20	98.69	9%
Demand Charge (c/KVA)		246.83	270.06	9%
Demand Charge (c/KVA); Where demand <80		8 174.89	8 944.15	9%

### Former INKWANCA:

<b>Large Consumers</b>				
Basic Charge: (R/month)		294.73	322.46	9%
Energy Charge (c/kWh):		63.28	69.23	9%
Demand Charge (c/KVA)		136.98	149.87	9%

## TIME OF USE (TOU) TARIFFS

Former LUKHANJI:

	2018/19 Approved Tariffs		2019/20 Proposed Tariffs (Excl. Vat)		% Increase	
	Low Season	High Season	Low Season	High Season	Low Season	High Season
<b>TX&lt;100 000kWh &lt;80kVA</b>						
Basic Charge: (R/month)	625.54	0.00	684.403314	0.00	9%	
Energy Charge (c/kWh):						
<i>Peak c/kWh</i>	323.37	329.23	353.799117	360.210543	9%	9%
<i>Standard c/kWh</i>	140.6	146.45	153.83046	160.230945	9%	9%
<i>Off-Peak c/kWh</i>	72.64	72.64	79.475424	79.475424	9%	9%
<i>Reactive Energy c/kVArh</i>		15.23		16.663143		9%

	2018/19 Approved Tariffs		2019/20 Proposed Tariffs (Excl. Vat)		% Increase	
	Low Season	High Season	Low Season	High Season	Low Season	High Season
<b>T7&lt;100 000kWh &gt;80kVA</b>						
Basic Charge: (R/month)	1201.94	0	1315.042554	0	9%	
Demand Charge (c/KVA)	98.87	105.7	108.173667	115.64637	9%	9%
Energy Charge (c/kWh):						
<i>Peak c/kWh</i>	193.31	214.41	211.500471	234.585981	9%	9%
<i>Standard c/kWh</i>	119.5	119.5	130.74495	130.74495	9%	9%
<i>Off-Peak c/kWh</i>	67.95	72.64	74.344095	79.475424	9%	9%
<i>Reactive Energy c/kVArh</i>		15.23		16.663143		9%

The rest of the major tariffs and the minor tariffs for the 2019/20 Financial Year are available in the following offices and Libraries:

- All Municipal Public Library
- Enoch Mgijima Municipal Offices
- Molteno Offices
- Tarkastad Offices
- Whittlesea offices
- Municipal Website: [www.enochmgijima.gov.za](http://www.enochmgijima.gov.za)



For any further enquiries, contact Miss N. Mani or Miss Z. Jam-Jam on 045 806 2686 alternatively Mr T Abofra – Budget Manager on 045 806 2009 from Monday- Friday between 08h00 and 16h30.

*Any persons who do not understand the content of this advert are invited to contact Mr X. Makeleni at the Corporate Services office at 045 - 8072608 or 70 Cathcart Road, Komani during office hours.*

*Umntu ongayiqondiyo lengxelo uyacelwa aqhakamshelane no Mnu X. Makeleni kwi-ofisi ye-Corporate Services kule nombolo 045 - 8072608 kwanombolo 70 Cathcart Road, Komani ngamaxsha omsebenzi 08:00 ukuya kwicala lentsimbi yesine.*

*Esi saziso singafumaneka ngolwimi lwesiXhosa kwi-ofisi ka Sosiba we-Dolophu; kwisakhiwo seHolo yeDolophu, kwi- Cathcart Road kuKomani.*

**S. NOMANDELA**  
**MUNICIPAL MANAGER**

**TOWN HALL**  
**CATHCART ROAD**